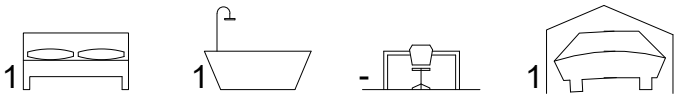




THE YALLAMBEE

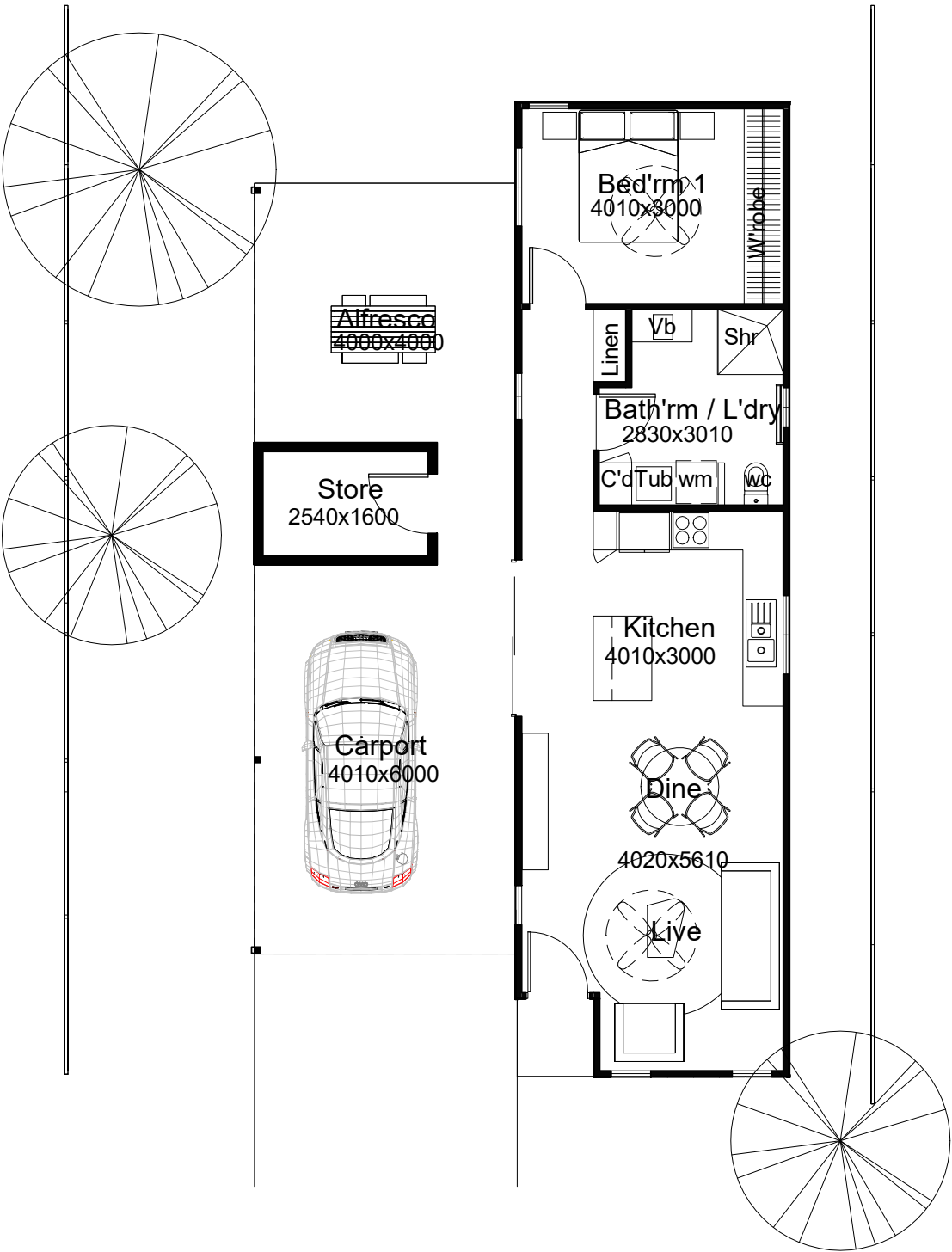


- * 1 bedroom x 1 bathroom.
- * Ample kitchen space with plenty of storage.
- * 600mm appliance package.
- * Internal wall painting, window treatments.
- * Quality floor coverings.
- * Internal & external light fittings.
- * Stylish bathrooms.
- * Solar power solution.
- * Large alfresco, carport.
- * Reverse cycle split A/C to living area, bed'rm 1.
- * Ceiling fan to living area / bed'rm 1

AREA:

LIVING AREA	=	61.7m2
ALFRESCO	=	16.0m2
PORCH	=	1.5m2
STORE	=	5.0m2
CARPORT	=	25.0m2

TOTAL AREA	=	109.2m2
------------	---	---------



1 YALLAMBEE - FLOOR PLAN

1 : 100

* Images are for illustrative purposes only.