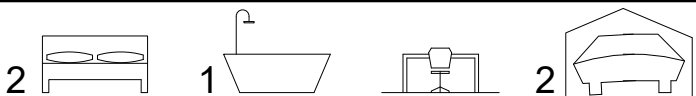


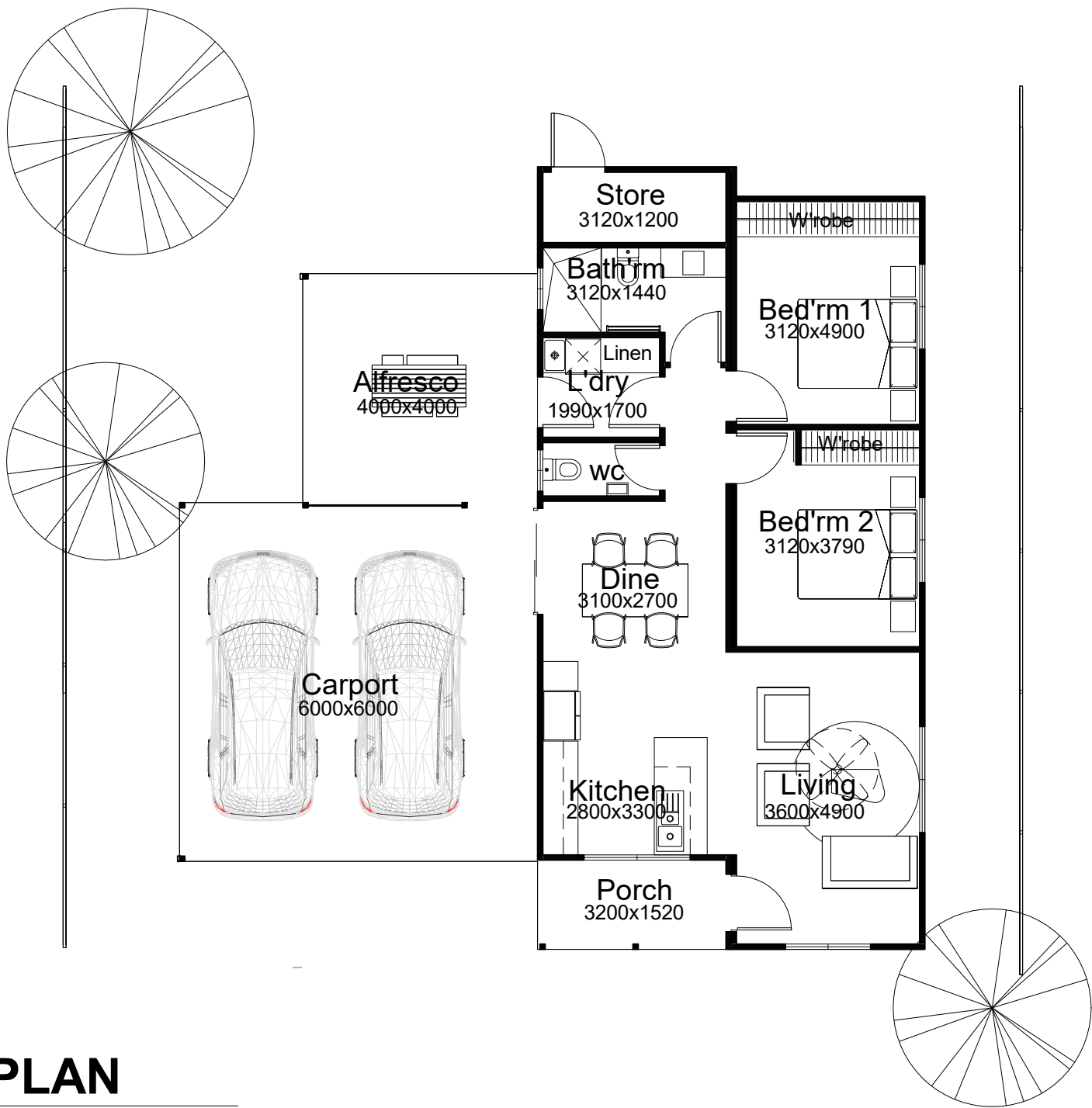


THE HELENA



- * 2 bedrooms x 1 bathrooms.
- * Ample kitchen space with plenty of storage.
- * 600mm appliance package.
- * Internal wall painting, window treatments.
- * Quality floor coverings.
- * Internal & external light fittings.
- * Stylish bathrooms.
- * Solar power solution.
- * Large alfresco, carport.
- * Reverse cycle split A/C to living area, bed'rm 1.
- * Ceiling fan to living area / bed'rm 1

AREA:			
LIVING AREA	=	77.3m2	
ALFRESCO	=	16.0m2	
PORCH	=	4.0m2	
STORE	=	4.0m2	
CARPORT	=	36.0m2	
TOTAL AREA:		=	137.3m2



1 HELENA -FLOOR PLAN

1 : 100

* Images are for illustrative purposes only.

