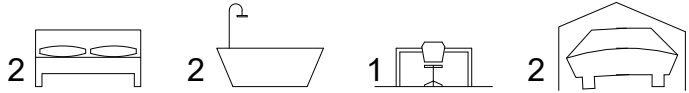


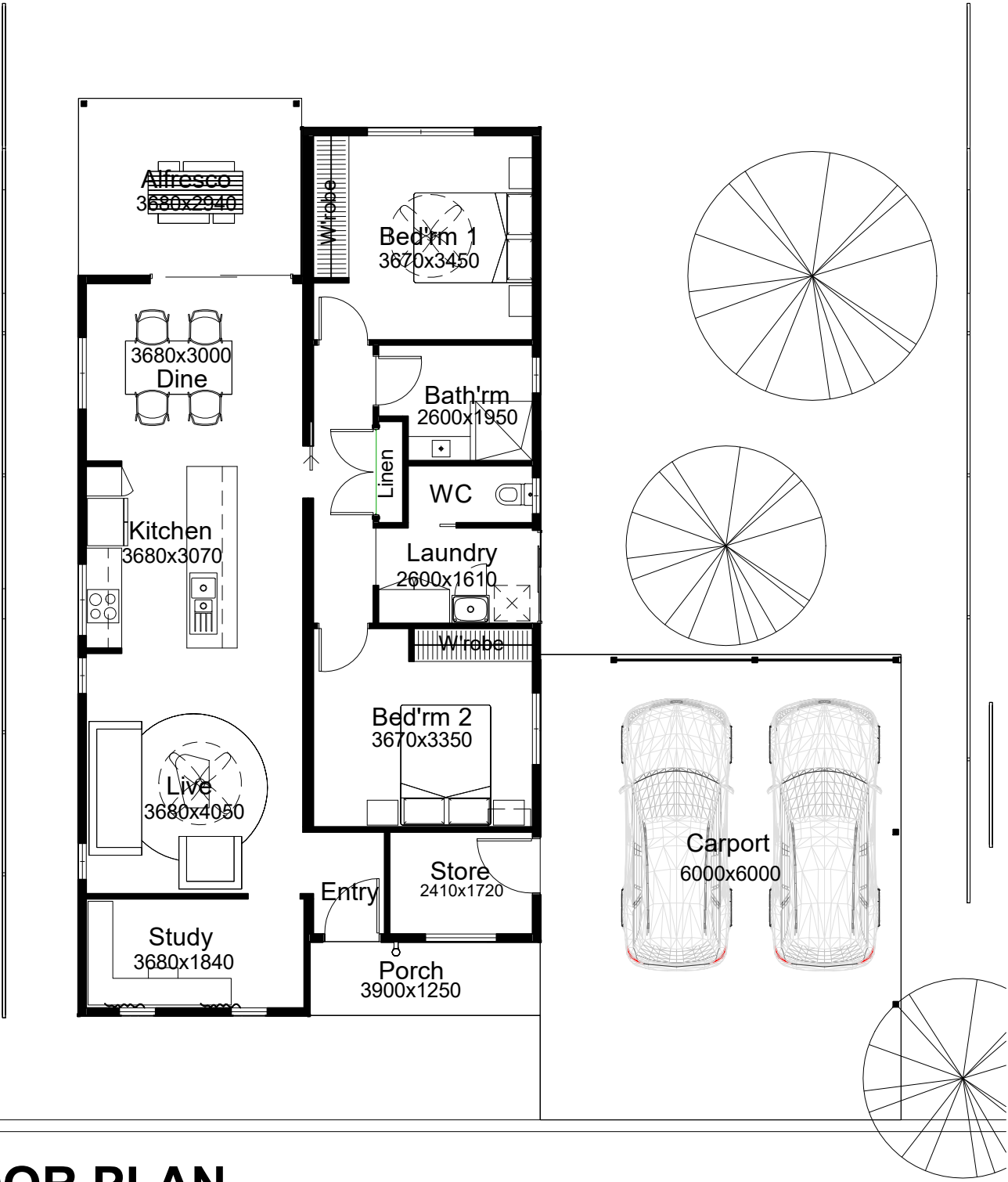


# THE BUNDALEER



- \* 2 bedrooms x 1 bathrooms x 1 study.
- \* Ample kitchen space with plenty of storage.
- \* 600mm appliance package.
- \* Internal wall painting, window treatments.
- \* Quality floor coverings.
- \* Internal & external light fittings.
- \* Stylish bathrooms.
- \* Solar power solution.
- \* Large alfresco, carport.
- \* Reverse cycle split A/C to living area, bed'rm 1.
- \* Ceiling fan to living area / bed'rm 1

AREA:		
LIVING AREA	=	97.8m2
ALFRESCO	=	11.3m2
PORCH	=	5.0m2
STORE	=	4.0m2
CARPORT	=	36.0m2
TOTAL AREA:		= 154.9m2



1

## BUNDALEER FLOOR PLAN

1 : 100

\* Images are for illustrative purposes only.