

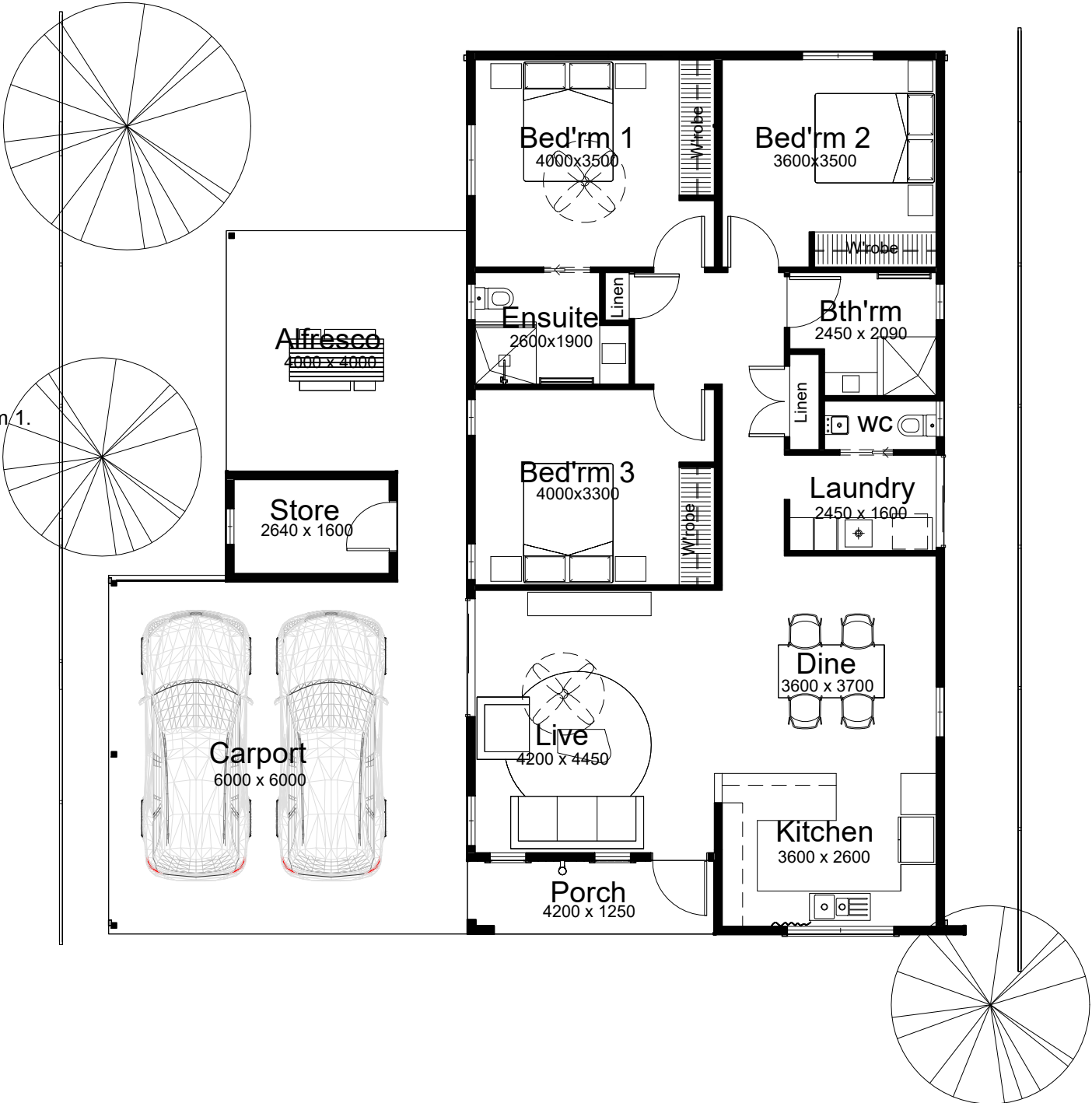


THE AMAROO

3 2 - 2

- * 3 bedrooms x 2 bathrooms.
- * Ample kitchen space with plenty of storage.
- * 600mm appliance package.
- * Internal wall painting, window treatments.
- * Quality floor coverings.
- * Internal & external light fittings.
- * Stylish bathrooms.
- * Solar power solution.
- * Large alfresco, carport.
- * Reverse cycle split A/C to living area, bed'rm 1.
- * Ceiling fan to living area / bed'rm 1

AREA:	
LIVING AREA	= 116.2m2
ALFRESCO	= 16.0m2
PORCH	= 4.9m2
STORE	= 4.2m2
CARPORT	= 36.0m2
TOTAL AREA: = 177.9m2	



1 AMAROO - FLOOR PLAN
1 : 100

* Images are for illustrative purposes only.

